

Reading

Reading Section

In the reading section, you will answer 35–48 questions to demonstrate how well you understand academic and non-academic texts in English. There are three types of tasks.

Type of Task	Description
Complete the Words	Fill in the missing letters in a paragraph.
Read in Daily Life	Answer questions about everyday reading material.
Read an Academic Passage	Answer questions about academic passages.

Module 1

The clock will show you how much time you have to complete Module 1.

You can use **Next** and **Back** to move to the next question or return to previous questions within the same module.

You WILL NOT be able to return to Module 1 once you have begun Module 2.

Fill in the missing letters in the paragraph.

The study of the universe is called cosmology. The scope of this field is extremely large, encompassing everything from the smallest particles to vast galaxies. One intriguing hypothesis in cosmology is the Big Bang Theory, according to which the universe began approximately 13.8 billion years ago from an infinitely dense point. Cosmologists also study dark matter and dark energy. They observe cosmic microwave background radiation, the faint glow left over from the Big Bang, to gather information about the universe in its early days.

Read an email.

Date:	November 21
Subject:	Dentist Appointment
<p>Dear Mr. Johnson,</p> <p>Your appointment for having a cavity filled is scheduled for December 3 at 11:00 A.M. You should not eat for an hour after your appointment, so we recommend having a large breakfast before showing up for your appointment.</p> <p>Best regards,</p> <p>Dr. Emily Turner</p>	

What is the main purpose of the email?

- ☐ To request payment
- ☐ To confirm an appointment
- ☐ To ask about a procedure
- ☐ To explain food options

Read an email.

Date:	November 21
Subject:	Dentist Appointment
<p>Dear Mr. Johnson,</p> <p>Your appointment for having a cavity filled is scheduled for December 3 at 11:00 A.M. You should not eat for an hour after your appointment, so we recommend having a large breakfast before showing up for your appointment.</p> <p>Best regards,</p> <p>Dr. Emily Turner</p>	

What is Mr. Johnson advised to do in the morning?

- ☐ Brush his teeth
- ☐ Inspect some dental work
- ☐ Eat a large meal
- ☐ Avoid hot beverages

Read an email.

Date:	December 22
Subject:	Dental Check-up
<p>Dear Ms. Adams,</p> <p>Your appointment with Dr. Kim for a dental check-up is on January 12 at 10:00 A.M. Please arrive 15 minutes early to fill out some paperwork. You will be charged cancellation fees if you fail to show up for your appointment.</p> <p>Best regards, John Lee</p>	

When is Ms. Adams's appointment?

- ☐ 9:45 A.M.
- ☐ 10:00 A.M.
- ☐ 10:15 A.M.
- ☐ 12:00 P.M.

Read an email.

Date:	December 22
Subject:	Dental Check-up
<p>Dear Ms. Adams,</p> <p>Your appointment with Dr. Kim for a dental check-up is on January 12 at 10:00 A.M. Please arrive 15 minutes early to fill out some paperwork. You will be charged cancellation fees if you fail to show up for your appointment.</p> <p>Best regards, John Lee</p>	

Why should Ms. Adams arrive early for the appointment?

- ☐ To provide insurance details
- ☐ To avoid additional charges
- ☐ To complete paperwork
- ☐ To review a treatment plan

Read an email.

Date:	September 12
Subject:	Employee Performance Evaluations

Dear Ms. Harris,

I am writing to inform you that the annual employee performance evaluations are scheduled for next Wednesday through Friday, from 10:00 A.M. to 4:00 P.M., in Conference Room 5A. Each session will last approximately 30 minutes and will provide an opportunity to reflect on your accomplishments and discuss professional development goals. We have also collected comments from supervisors and colleagues, based on which you will receive constructive feedback.

To facilitate scheduling, please RSVP by end of day Monday, providing your preferred time slots and unavailable times. Additionally, we request that you bring any supporting documentation that highlights your key achievements, completed projects, and contributions over the past year.

Should you have any questions regarding the review process, feel free to reach out to the HR department at 555-4321.

We appreciate your preparation and look forward to a productive discussion.

Sincerely,
Thomas Walker

The email states that all of the following may occur during Ms. Harris' annual performance review EXCEPT

- ☐ She may present her greatest successes of the year.
- ☐ She may talk about things she would like to do in her future work.
- ☐ She may make comments about her supervisors' and colleagues' performance.
- ☐ She may be told ways that she can improve her work.

Read an email.

Date:	September 12
Subject:	Employee Performance Evaluations

Dear Ms. Harris,

I am writing to inform you that the annual employee performance evaluations are scheduled for next Wednesday through Friday, from 10:00 A.M. to 4:00 P.M., in Conference Room 5A. Each session will last approximately 30 minutes and will provide an opportunity to reflect on your accomplishments and discuss professional development goals. We have also collected comments from supervisors and colleagues, based on which you will receive constructive feedback.

To facilitate scheduling, please RSVP by end of day Monday, providing your preferred time slots and unavailable times. Additionally, we request that you bring any supporting documentation that highlights your key achievements, completed projects, and contributions over the past year.

Should you have any questions regarding the review process, feel free to reach out to the HR department at 555-4321.

We appreciate your preparation and look forward to a productive discussion.

Sincerely,
Thomas Walker

What can be inferred about the review sessions?

- ☐ They will be held in the main office.
- ☐ They require preparation.
- ☐ They will be conducted online.
- ☐ They will take up most of each employee's day.

Read an email.

Date:	September 12
Subject:	Employee Performance Evaluations

Dear Ms. Harris,

I am writing to inform you that the annual employee performance evaluations are scheduled for next Wednesday through Friday, from 10:00 A.M. to 4:00 P.M., in Conference Room 5A. Each session will last approximately 30 minutes and will provide an opportunity to reflect on your accomplishments and discuss professional development goals. We have also collected comments from supervisors and colleagues, based on which you will receive constructive feedback.

To facilitate scheduling, please RSVP by end of day Monday, providing your preferred time slots and unavailable times. Additionally, we request that you bring any supporting documentation that highlights your key achievements, completed projects, and contributions over the past year.

Should you have any questions regarding the review process, feel free to reach out to the HR department at 555-4321.

We appreciate your preparation and look forward to a productive discussion.

Sincerely,
Thomas Walker

It can be inferred that the exact time and day for each employee's review will be determined by

- ☐ considering all employees' preferences and times when they are otherwise busy
- ☐ beginning with the most accomplished employees and ending with the least accomplished
- ☐ grouping together employees who have all worked on the same projects
- ☐ beginning with the newest employees and finishing with the most senior

Urbanization in the Nineteenth Century

The nineteenth century witnessed a dramatic shift in population dynamics because of urbanization. Industrialization played a crucial role in this transformation, drawing people from rural areas to cities in search of employment and better living conditions. The **proliferation** of factories and the promise of higher wages attracted a diverse workforce, including women and children.

Cities expanded rapidly, leading to overcrowded living conditions and inadequate infrastructure. Housing was often substandard, and sanitation issues were prevalent. As a result, urban areas became hot spots for diseases such as cholera and tuberculosis. Despite the challenges faced by urban planners and legislators, urbanization brought significant advancements in public transportation, communication, and commerce.

The influx of people into cities also led to major cultural shifts and the rise of new social classes. A burgeoning middle class emerged, distinguished by its economic power and influence. This class played a pivotal role in advocating for social reforms, including improved working conditions and public-health measures. While urbanization presented numerous obstacles, it undeniably laid the groundwork for modern society.

The word “proliferation” in the passage is closest in meaning to

- ☐ replacement
- ☐ reduction
- ☐ increase
- ☐ movement

Urbanization in the Nineteenth Century

The nineteenth century witnessed a dramatic shift in population dynamics because of urbanization. Industrialization played a crucial role in this transformation, drawing people from rural areas to cities in search of employment and better living conditions. The proliferation of factories and the promise of higher wages attracted a diverse workforce, including women and children.

Cities expanded rapidly, leading to overcrowded living conditions and inadequate infrastructure. Housing was often substandard, and sanitation issues were prevalent. As a result, urban areas became hot spots for diseases such as cholera and tuberculosis. Despite the challenges faced by urban planners and legislators, urbanization brought significant advancements in public transportation, communication, and commerce.

The influx of people into cities also led to major cultural shifts and the rise of new social classes. A burgeoning middle class emerged, distinguished by its economic power and influence. This class played a pivotal role in advocating for social reforms, including improved working conditions and public-health measures. While urbanization presented numerous obstacles, it undeniably laid the groundwork for modern society.

What was a significant effect of industrialization in the nineteenth century?

- ☐ Decreasing populations in rural areas
- ☐ Improved sanitation in cities
- ☐ Reduced employment opportunities for women in cities
- ☐ The development of improved agricultural practices for rural areas

Urbanization in the Nineteenth Century

The nineteenth century witnessed a dramatic shift in population dynamics because of urbanization. Industrialization played a crucial role in this transformation, drawing people from rural areas to cities in search of employment and better living conditions. The proliferation of factories and the promise of higher wages attracted a diverse workforce, including women and children.

Cities expanded rapidly, leading to overcrowded living conditions and inadequate infrastructure. Housing was often substandard, and sanitation issues were prevalent. As a result, urban areas became hot spots for diseases such as cholera and tuberculosis. Despite the challenges faced by urban planners and legislators, urbanization brought significant advancements in public transportation, communication, and commerce.

The influx of people into cities also led to major cultural shifts and the rise of new social classes. A burgeoning middle class emerged, distinguished by its economic power and influence. This class played a pivotal role in advocating for social reforms, including improved working conditions and public-health measures. While urbanization presented numerous obstacles, it undeniably laid the groundwork for modern society.

Why does the author mention diseases such as cholera and tuberculosis?

- ☐ To illustrate the health challenges faced by urban areas
- ☐ To emphasize the need for modern health care
- ☐ To compare urban and rural health conditions
- ☐ To suggest that these diseases were almost eradicated in the nineteenth century

Urbanization in the Nineteenth Century

The nineteenth century witnessed a dramatic shift in population dynamics because of urbanization. Industrialization played a crucial role in this transformation, drawing people from rural areas to cities in search of employment and better living conditions. The proliferation of factories and the promise of higher wages attracted a diverse workforce, including women and children.

Cities expanded rapidly, leading to overcrowded living conditions and inadequate infrastructure. Housing was often substandard, and sanitation issues were prevalent. As a result, urban areas became hot spots for diseases such as cholera and tuberculosis. Despite the challenges faced by urban planners and legislators, urbanization brought significant advancements in public transportation, communication, and commerce.

The influx of people into cities also led to major cultural shifts and the rise of new social classes. A burgeoning middle class emerged, distinguished by its economic power and influence. This class played a pivotal role in advocating for social reforms, including improved working conditions and public-health measures. While urbanization presented numerous obstacles, it undeniably laid the groundwork for modern society.

How did urbanization impact public transportation?

- ☐ It led to a decline in the quality of public transportation.
- ☐ It brought various improvements to public transportation.
- ☐ It caused a reduction in public transportation options.
- ☐ It made public transportation more expensive for city residents.

Urbanization in the Nineteenth Century

The nineteenth century witnessed a dramatic shift in population dynamics because of urbanization. Industrialization played a crucial role in this transformation, drawing people from rural areas to cities in search of employment and better living conditions. The proliferation of factories and the promise of higher wages attracted a diverse workforce, including women and children.

Cities expanded rapidly, leading to overcrowded living conditions and inadequate infrastructure. Housing was often substandard, and sanitation issues were prevalent. As a result, urban areas became hot spots for diseases such as cholera and tuberculosis. Despite the challenges faced by urban planners and legislators, urbanization brought significant advancements in public transportation, communication, and commerce.

The influx of people into cities also led to major cultural shifts and the rise of new social classes. A burgeoning middle class emerged, distinguished by its economic power and influence. This class played a pivotal role in advocating for social reforms, including improved working conditions and public-health measures. While urbanization presented numerous obstacles, it undeniably laid the groundwork for modern society.

What is the relationship between paragraphs 2 and 3?

- ☐ Paragraph 3 contradicts the points made in paragraph 2.
- ☐ Paragraph 3 offers solutions to the problems mentioned in paragraph 2.
- ☐ Paragraph 3 provides evidence to support the claims made in paragraph 2.
- ☐ Paragraph 3 discusses the social changes that resulted from the conditions described in paragraph 2.

Cognitive Mapping

Cognitive mapping is a term used to describe the mental process by which humans and animals acquire, code, store, recall, and decode information about their spatial environment. This concept, first proposed by psychologist Edward Tolman in the 1940s, revolutionized the understanding of navigation and spatial awareness. Tolman suggested that individuals create internal maps that help them navigate their surroundings efficiently.

Recent research indicates that cognitive mapping is more complex than initially thought. Neuroscientists have discovered that the hippocampus, a region of the brain associated with memory, plays a crucial role in this process. Studies involving brain imaging have shown that when people navigate through unfamiliar environments, the hippocampus becomes highly active. This suggests that cognitive mapping is not just a mental representation but also involves distinct neural pathways.

Moreover, cognitive maps are not static; they evolve with new experiences and information. For instance, if you take a different route to work, your brain updates the existing map to include this new pathway. This dynamic nature of cognitive mapping underscores its importance in learning and adaptation. Despite these advances, many questions remain about the precise mechanisms governing cognitive maps and how they vary across species.

What is cognitive mapping?

- ☐ The process of creating physical maps
- ☐ The mental process of understanding spatial environments
- ☐ The storage of information in the hippocampus
- ☐ The act of navigating familiar environments

Cognitive Mapping

Cognitive mapping is a term used to describe the mental process by which humans and animals acquire, code, store, recall, and decode information about their spatial environment. This concept, first proposed by psychologist Edward Tolman in the 1940s, revolutionized the understanding of navigation and spatial awareness. Tolman suggested that individuals create internal maps that help them navigate their surroundings efficiently.

Recent research indicates that cognitive mapping is more complex than initially thought. Neuroscientists have discovered that the hippocampus, a region of the brain associated with memory, plays a **crucial** role in this process. Studies involving brain imaging have shown that when people navigate through unfamiliar environments, the hippocampus becomes highly active. This suggests that cognitive mapping is not just a mental representation but also involves distinct neural pathways.

Moreover, cognitive maps are not static; they evolve with new experiences and information. For instance, if you take a different route to work, your brain updates the existing map to include this new pathway. This dynamic nature of cognitive mapping underscores its importance in learning and adaptation. Despite these advances, many questions remain about the precise mechanisms governing cognitive maps and how they vary across species.

The word “crucial” in the second paragraph is closest in meaning to

- ☐ significant
- ☐ complex
- ☐ optional
- ☐ rare

Cognitive Mapping

Cognitive mapping is a term used to describe the mental process by which humans and animals acquire, code, store, recall, and decode information about their spatial environment. This concept, first proposed by psychologist Edward Tolman in the 1940s, revolutionized the understanding of navigation and spatial awareness. Tolman suggested that individuals create internal maps that help them navigate their surroundings efficiently.

Recent research indicates that cognitive mapping is more complex than initially thought. Neuroscientists have discovered that the hippocampus, a region of the brain associated with memory, plays a crucial role in this process. Studies involving brain imaging have shown that when people navigate through unfamiliar environments, the hippocampus becomes highly active. This suggests that cognitive mapping is not just a mental representation but also involves distinct neural pathways.

Moreover, cognitive maps are not static; they evolve with new experiences and information. For instance, if you take a different route to work, your brain updates the existing map to include this new pathway. This dynamic nature of cognitive mapping underscores its importance in learning and adaptation. Despite these advances, many questions remain about the precise mechanisms governing cognitive maps and how they vary across species.

What role does the hippocampus play in cognitive mapping?

- ☐ It stores physical maps.
- ☐ It codes memories about familiar routes.
- ☐ It decodes information about spatial environments.
- ☐ It functions when navigating new environments.

Cognitive Mapping

Cognitive mapping is a term used to describe the mental process by which humans and animals acquire, code, store, recall, and decode information about their spatial environment. This concept, first proposed by psychologist Edward Tolman in the 1940s, revolutionized the understanding of navigation and spatial awareness. Tolman suggested that individuals create internal maps that help them navigate their surroundings efficiently.

Recent research indicates that cognitive mapping is more complex than initially thought. Neuroscientists have discovered that the hippocampus, a region of the brain associated with memory, plays a crucial role in this process. Studies involving brain imaging have shown that when people navigate through unfamiliar environments, the hippocampus becomes highly active. This suggests that cognitive mapping is not just a mental representation but also involves distinct neural pathways.

Moreover, cognitive maps are not static; they evolve with new experiences and information. For instance, if you take a different route to work, your brain updates the existing map to include this new pathway. This dynamic nature of cognitive mapping underscores its importance in learning and adaptation. Despite these advances, many questions remain about the precise mechanisms governing cognitive maps and how they vary across species.

How do cognitive maps change over time?

- ☐ They remain static.
- ☐ They update with new experiences.
- ☐ They become less detailed.
- ☐ They are replaced by complex maps.

Cognitive Mapping

Cognitive mapping is a term used to describe the mental process by which humans and animals acquire, code, store, recall, and decode information about their spatial environment. This concept, first proposed by psychologist Edward Tolman in the 1940s, revolutionized the understanding of navigation and spatial awareness. Tolman suggested that individuals create internal maps that help them navigate their surroundings efficiently.

Recent research indicates that cognitive mapping is more complex than initially thought. Neuroscientists have discovered that the hippocampus, a region of the brain associated with memory, plays a crucial role in this process. Studies involving brain imaging have shown that when people navigate through unfamiliar environments, the hippocampus becomes highly active. This suggests that cognitive mapping is not just a mental representation but also involves distinct neural pathways.

Moreover, cognitive maps are not static; they evolve with new experiences and information. For instance, if you take a different route to work, your brain updates the existing map to include this new pathway. This dynamic nature of cognitive mapping underscores its importance in learning and adaptation. Despite these advances, many questions remain about the precise mechanisms governing cognitive maps and how they vary across species.

What is the purpose of the third paragraph?

- ☐ It explains an additional feature of cognitive mapping.
- ☐ It provides evidence contradicting the information presented in the passage.
- ☐ It concludes the passage by stating that cognitive mapping is now well studied and understood.
- ☐ It describes examples illustrating the numerous features discussed in paragraph 2.

Module 2

The clock will show you how much time you have to complete Module 2.

Fill in the missing letters in the paragraph.

Classical civilizations, such as Ancient Greece and Rome, have profoundly influenced modern Western culture. These societies achieved remarkable progress in philosophy, science, and government. The Greeks introduced fundamental ideas in democracy, whereas the Romans created an intricate legal framework. Studying classical civilizations provides insights into the origins of contemporary political systems, literary traditions, and architectural styles, highlighting the enduring legacy of these ancient cultures.

Vibrio Bacteria

Vibrio bacteria are a type of bacteria commonly found in coastal waters. These bacteria are known for their ability to cause a variety of infections in humans, ranging from mild gastroenteritis to severe wound infections. Vibrio species thrive in warm, salty environments, making them particularly **prevalent** in tropical and subtropical regions. There are more than twenty different species of Vibrio bacteria, with *Vibrio cholerae*, *Vibrio parahaemolyticus*, and *Vibrio vulnificus* being the most well-known.

One of the most concerning aspects of Vibrio bacteria is their increasing resistance to antibiotics. Over time, some strains of Vibrio have developed mechanisms to evade the effects of commonly used antibiotics. Researchers are working to understand the genetic mutations that contribute to this resistance, which could lead to the development of more effective treatments.

Additionally, climate change is amplifying the risks associated with Vibrio bacteria. Rising sea temperatures and changing salinity levels create ideal conditions for these bacteria to multiply. As a result, there has been a noticeable increase in Vibrio-related infections in regions previously unaffected. This trend underscores the importance of monitoring environmental changes and implementing public-health strategies to mitigate the impact of these bacteria.

The word “prevalent” in the passage is closest in meaning to

- ☐ widespread
- ☐ limited
- ☐ dangerous
- ☐ rare

Vibrio Bacteria

Vibrio bacteria are a type of bacteria commonly found in coastal waters. These bacteria are known for their ability to cause a variety of infections in humans, ranging from mild gastroenteritis to severe wound infections. Vibrio species thrive in warm, salty environments, making them particularly prevalent in tropical and subtropical regions. There are more than twenty different species of Vibrio bacteria, with *Vibrio cholerae*, *Vibrio parahaemolyticus*, and *Vibrio vulnificus* being the most well-known.

One of the most concerning aspects of Vibrio bacteria is their increasing resistance to antibiotics. Over time, some strains of Vibrio have developed mechanisms to evade the effects of commonly used antibiotics. Researchers are working to understand the genetic mutations that contribute to this resistance, which could lead to the development of more effective treatments.

Additionally, climate change is amplifying the risks associated with Vibrio bacteria. Rising sea temperatures and changing salinity levels create ideal conditions for these bacteria to multiply. As a result, there has been a noticeable increase in Vibrio-related infections in regions previously unaffected. This trend underscores the importance of monitoring environmental changes and implementing public-health strategies to mitigate the impact of these bacteria.

All of the following are true of Vibrio bacteria species EXCEPT:

- ☐ Most species are located in the waters along coastlines.
- ☐ All species cause severe infections.
- ☐ There are more than twenty total species.
- ☐ Certain species are more well known than others.

Vibrio Bacteria

Vibrio bacteria are a type of bacteria commonly found in coastal waters. These bacteria are known for their ability to cause a variety of infections in humans, ranging from mild gastroenteritis to severe wound infections. Vibrio species thrive in warm, salty environments, making them particularly prevalent in tropical and subtropical regions. There are more than twenty different species of Vibrio bacteria, with *Vibrio cholerae*, *Vibrio parahaemolyticus*, and *Vibrio vulnificus* being the most well-known.

One of the most concerning aspects of Vibrio bacteria is their increasing resistance to antibiotics. Over time, some strains of Vibrio have developed mechanisms to evade the effects of commonly used antibiotics. Researchers are working to understand the genetic mutations that contribute to this resistance, which could lead to the development of more effective treatments.

Additionally, climate change is amplifying the risks associated with Vibrio bacteria. Rising sea temperatures and changing salinity levels create ideal conditions for these bacteria to multiply. As a result, there has been a noticeable increase in Vibrio-related infections in regions previously unaffected. This trend underscores the importance of monitoring environmental changes and implementing public-health strategies to mitigate the impact of these bacteria.

What does the passage identify as an important concern about Vibrio bacteria today?

- ☐ They are becoming less common in tropical regions.
- ☐ They are causing fewer health problems in humans.
- ☐ Certain kinds are mutating more rapidly than other kinds.
- ☐ Certain kinds have become resistant to an important drug.

Vibrio Bacteria

Vibrio bacteria are a type of bacteria commonly found in coastal waters. These bacteria are known for their ability to cause a variety of infections in humans, ranging from mild gastroenteritis to severe wound infections. Vibrio species thrive in warm, salty environments, making them particularly prevalent in tropical and subtropical regions. There are more than twenty different species of Vibrio bacteria, with *Vibrio cholerae*, *Vibrio parahaemolyticus*, and *Vibrio vulnificus* being the most well-known.

One of the most concerning aspects of Vibrio bacteria is their increasing resistance to antibiotics. Over time, some strains of Vibrio have developed mechanisms to evade the effects of commonly used antibiotics. Researchers are working to understand the genetic mutations that contribute to this resistance, which could lead to the development of more effective treatments.

Additionally, climate change is amplifying the risks associated with Vibrio bacteria. Rising sea temperatures and changing salinity levels create ideal conditions for these bacteria to multiply. As a result, there has been a noticeable increase in Vibrio-related infections in regions previously unaffected. This trend underscores the importance of monitoring environmental changes and implementing public-health strategies to mitigate the impact of these bacteria.

Why does the author mention "climate change"?

- ☐ To suggest that it has no effect on Vibrio bacteria
- ☐ To explain why Vibrio bacteria are not found in cold waters
- ☐ To help explain why certain types of infections have been spreading to formerly unaffected areas
- ☐ To indicate another reason that antibiotics contribute to bacterial resistance

Vibrio Bacteria

Vibrio bacteria are a type of bacteria commonly found in coastal waters. These bacteria are known for their ability to cause a variety of infections in humans, ranging from mild gastroenteritis to severe wound infections. Vibrio species thrive in warm, salty environments, making them particularly prevalent in tropical and subtropical regions. There are more than twenty different species of Vibrio bacteria, with *Vibrio cholerae*, *Vibrio parahaemolyticus*, and *Vibrio vulnificus* being the most well-known.

One of the most concerning aspects of Vibrio bacteria is their increasing resistance to antibiotics. Over time, some strains of Vibrio have developed mechanisms to evade the effects of commonly used antibiotics. Researchers are working to understand the genetic mutations that contribute to this resistance, which could lead to the development of more effective treatments.

Additionally, climate change is amplifying the risks associated with Vibrio bacteria. Rising sea temperatures and changing salinity levels create ideal conditions for these bacteria to multiply. As a result, there has been a noticeable increase in Vibrio-related infections in regions previously unaffected. This trend underscores the importance of monitoring environmental changes and implementing public-health strategies to mitigate the impact of these bacteria.

Click on the sentence in paragraph 3 that identifies specific environmental conditions associated with a contemporary concern about Vibrio bacteria.

Listening

Listening Section

In the listening section, you will answer 35–45 questions to demonstrate how well you understand spoken English. There are three types of tasks.

Type of Task	Description
Listen and Choose a Response	Select the best response to the question or statement.
Conversations	Answer questions about short conversations.
Announcements and Academic Talks	Answer questions about announcements and academic talks.

You WILL NOT be able to return to previous questions.

Listening

Module 1

The clock will show you how much time you have to complete each question.

You can use **Next** to move to the next question.

The first task is **Listen and Choose a Response**. In this task, you will listen to a sentence or question. You will then read four sentences and choose the option that is the best response.

Choose the best response.



- ☐ Yes, always.
- ☐ At the theater.
- ☐ I don't remember.
- ☐ I certainly hope so.

Choose the best response.



- ☐ Where can I find him?
- ☐ I don't need more time.
- ☐ I have an extensive collection.
- ☐ You can find it in the garage.

Choose the best response.



- ☐ I prefer coffee.
- ☐ Yes, thank you.
- ☐ I think I do.
- ☐ I'll look it up now.

Choose the best response.



- ☐ Yes, please.
- ☐ No, you may not.
- ☐ Why not?
- ☐ I forgot to.

Choose the best response.



- ☐ No, I really shouldn't.
- ☐ Not until you're ready.
- ☐ Yes, and I always have.
- ☐ Running.

Choose the best response.



- ☐ I'd like your opinion now, please.
- ☐ They'll wait for us at the entrance.
- ☐ I'll ask when they can begin working.
- ☐ They say they're ready now.

Choose the best response.



- ☐ The autumn classes are all full.
- ☐ Mr. Lee bought the house.
- ☐ The head of the department.
- ☐ I'll show you where it is.

Choose the best response.



- ☐ It was changed to 7 p.m.
- ☐ In the Wilson Auditorium.
- ☐ It's a new recipe I'm trying out.
- ☐ I haven't received my order yet.

Listening

Listen to a conversation.





Why is the man running late?

- ☐ He missed his train.
- ☐ He had a meeting with a professor.
- ☐ He is stuck in traffic.
- ☐ He was finishing an assignment.



What will the woman probably do next?

- ☐ Call a friend
- ☐ Go to a museum
- ☐ Read a review
- ☐ Take some photographs

Listening

Listen to a conversation.





Why is the man asking about a place to eat?

- ☐ He is celebrating a special occasion.
- ☐ He forgot to bring his lunch to work.
- ☐ He wants to try a new type of food.
- ☐ He wants to meet a friend for lunch.



What can be inferred about the man?

- ☐ He does not have a lot of time to eat.
- ☐ He is on vacation.
- ☐ He does not eat certain foods.
- ☐ He usually exercises during the lunch break.

Listening

Listen to an announcement at a university event.





What is the main topic of the announcement?

- ☐ A student meeting
- ☐ A theater workshop
- ☐ An upcoming drama festival
- ☐ A new drama course



What does the speaker hope the listeners will do?

- ☐ Submit their scripts
- ☐ Join a theater group
- ☐ Prepare for a performance
- ☐ Attend the festival

Listening

Listen to an announcement at a university club meeting.





What is the main topic of the announcement?

- ☐ A new club initiative
- ☐ A student orientation
- ☐ A club meeting
- ☐ An upcoming hiking trip



What does the speaker suggest members bring?

- ☐ Books and notebooks
- ☐ Maps and sunscreen
- ☐ Tents and sleeping bags
- ☐ Water, snacks, and comfortable shoes

Listening

Listen to a talk in a business class.





What is the main topic of the talk?

- ☐ The benefits of renewable energy
- ☐ The importance of fair wages for employees
- ☐ A business model that considers social and environmental factors
- ☐ A challenge of community engagement



According to the speaker, what is the main feature of CSR?

- ☐ Compliance with legal requirements
- ☐ Voluntary actions that benefit society
- ☐ Maximizing short-term profits
- ☐ Reducing operational costs



Why does the speaker mention renewable energy sources?

- ☐ To illustrate one way a company could be socially responsible
- ☐ To discuss the advantages of solar power over wind power
- ☐ To highlight the higher costs associated with CSR
- ☐ To explain the complexity of measuring CSR impact



What will the speaker most likely discuss next?

- ☐ Challenges related to community engagement
- ☐ Research on how companies can increase consumer trust
- ☐ Studies of companies that practice CSR
- ☐ Challenges in adopting CSR

Listening

Module 2

The clock will show you how much time you have to complete each question.

You can use **Next** to move to the next question.

You WILL NOT be able to return to previous questions.

Choose the best response.



- ☐ Yes, let's open it.
- ☐ Wouldn't miss it.
- ☐ I hope it goes well.
- ☐ I think it's tomorrow.

Choose the best response.



- ☐ It's unfortunate that the price is so high.
- ☐ I'll schedule it for tomorrow then.
- ☐ It's a lovely day for a walk.
- ☐ The morning traffic is always terrible.

Choose the best response.



- ☐ I can help with that.
- ☐ OK, I don't understand.
- ☐ What is it you don't understand?
- ☐ What is your question?

Listening

Listen to a conversation.





What event are the speakers planning to attend?

- ☐ A concert
- ☐ A theater show
- ☐ An art exhibition
- ☐ A book reading



When will the event begin?

- ☐ 4 p.m.
- ☐ 5 p.m.
- ☐ 6 p.m.
- ☐ 7 p.m.

Listening

Listen to a conversation.





What event are the speakers discussing?

- ☐ A festival
- ☐ A concert
- ☐ A farmers market
- ☐ A marketing workshop



Why is the woman interested in the event?

- ☐ She likes making purchases there.
- ☐ She wants to meet new people there.
- ☐ She is looking for job opportunities.
- ☐ She enjoys live music.

Listening

Listen to a talk in a psychology class.





What is the main topic of the talk?

- ☐ The importance of emotional regulation
- ☐ The ability to respond to difficulties
- ☐ The role of genetics in psychological traits
- ☐ The impact of social connections on adversity



According to the speaker, what is one characteristic of resilience?

- ☐ The tendency to avoid difficult situations
- ☐ The habit of offering practical assistance to others
- ☐ The view of problems as being temporary
- ☐ The desire to limit one's ties to family and friends



Why does the speaker mention communities with strong social bonds?

- ☐ To provide an example of the relationship between social connections and resilience
- ☐ To explain how genetic factors influence collective resilience
- ☐ To discuss the impact of physical health on collective resilience
- ☐ To illustrate the importance of financial assistance



What will the speaker discuss next?

- ☐ The genetic basis of resilience
- ☐ Ways that people can increase their resilience
- ☐ The impact of mental health on resilience
- ☐ Different types of stress and their effects on resilience

Listening

Listen to a talk in an anthropology class.





What is the main topic of the talk?

- ☐ The traditional methods of tattooing
- ☐ The cultural significance of tattoos
- ☐ The history of tattooing in Western society
- ☐ The artistic styles of Japanese tattoos



According to the talk, what do Polynesian tattoos signify?

- ☐ Mythological creatures
- ☐ Spiritual protection
- ☐ Social status and heritage
- ☐ Personal memories



Why does the speaker mention the Japanese government ban on *irezumi*?

- ☐ To help show how attitudes toward tattoos in Japan changed over time
- ☐ To highlight the function of tattoos as political expression
- ☐ To contrast the types of tattoos in Japan with those in Polynesia
- ☐ To explain the role of tattoos in youth culture



What can be inferred about the way anthropologists view tattooing practices?

- ☐ They focus solely on artistic techniques.
- ☐ They study the links between tattoos and cultural identity.
- ☐ They believe tattoos have no societal impact.
- ☐ They disregard contemporary tattoo styles.

Writing

Writing

In the writing section, you will answer 12 questions to demonstrate how well you can write in English. There are three types of tasks.

Type of Task	Description
Build a Sentence	Create a grammatical sentence.
Write an Email	Write an email using information provided.
Write for an Academic Discussion	Participate in an online discussion.

Build a Sentence

Move the words in the boxes to create grammatical sentences.

A clock will show you how much time you have to complete this task.

Make an appropriate sentence.



What were you talking about after the meeting ended?



Some colleagues _____
_____.

a conference they wanted to can register for make find out where

Make an appropriate sentence.



Did you finish reading the book I lent you?



_____ yet.

time had have not having it to read I

Make an appropriate sentence.



Did you get tickets for the concert?



Unfortunately, _____ longer _____.

available the tickets were no did online

Make an appropriate sentence.



Where do you want to go for dinner?



_____ that opened _____ .

serves many week the diner delicious entrees last

Make an appropriate sentence.



When will the new office furniture arrive?



The desk _____.

scheduled to arrive you Friday is ordered on

Make an appropriate sentence.



Where did you find that book?



The bookstore _____.

by stock the novel in had stopped I on

Make an appropriate sentence.



Why do you prefer that brand of coffee?



This coffee _____
_____.

better the other brands than good tried I've all of tastes

Make an appropriate sentence.



Where did you get that scarf?



_____ the post office _____
_____.

the store to next of winter apparel sells all types

Make an appropriate sentence.



Why didn't you go to the library today?



_____ in town _____
_____.

library temporarily closed for is renovations the only

Make an appropriate sentence.



Can you recommend a good book to read?



_____.

my sister you that suggest one might interest can be

Writing

Write an Email

You will read some information and use the information to write an email.

You will have 7 minutes to write the email.

Your friend Emma has recently moved to a new city and is feeling a bit overwhelmed. She has reached out to you for advice on how to adjust to her new environment and make new friends. You have lived in several cities before, and you have experience with finding ways to settle into new places.

Write an email to Emma. In your email, do the following:

- Describe how you adjusted to a new city.
- Give Emma suggestions on how she can make new friends.
- Offer different ways to help her if she needs more advice.

Write as much as you can and in complete sentences.

Your Response:

To: Emma

Subject: Tips for settling into a new city

Cut

Paste

Undo

Redo

 Hide Word Count 0

Writing

Write for an Academic Discussion

A professor has posted a question about a topic and students have responded with their thoughts and ideas. Make a contribution to the discussion.

You will have 10 minutes to write.

Your professor is teaching a class on economics. Write a post responding to the professor's question.

In your response, you should do the following.

- Express and support your opinion.
- Make a contribution to the discussion in your own words.

An effective response will contain at least 100 words.



Dr. Diaz

We've been discussing the concept of a universal basic income (UBI) in our class as a solution to economic inequality. Some argue that UBI with everyone getting a similar income can provide financial security and reduce poverty, while others believe it can discourage people from working and can negatively impact the economy. Do you think implementing UBI is a good idea? Why or why not?



Claire

I think UBI is a good idea because it can provide a safety net for people who are struggling financially. It would help reduce poverty and give everyone a basic level of security, allowing them to focus on improving their lives without the constant fear of financial instability.



Andrew

I don't think UBI is a good idea because it might discourage people from working. If people receive money without having to work for it, they might lose motivation to find jobs, which could lead to lower productivity and negatively impact the economy as a whole.

Cut

Paste

Undo

Redo

 Hide Word Count 0

Speaking

Speaking Section

In the speaking section, you will answer 11 questions to demonstrate how well you can speak English. There are two types of tasks.

Type of Task	Description
Listen and Repeat	Listen and repeat what you heard
Take an Interview	Answer questions from the interviewer

Speaking

Listen and Repeat

You will listen as someone speaks to you. Listen carefully and then repeat what you have heard. The clock will indicate how much time you have to speak.

No time for preparation will be provided.

Speaking

You are being trained to help visitors during a museum tour. Listen to your trainer and repeat what she says. Repeat only once.



Listen and repeat only once.

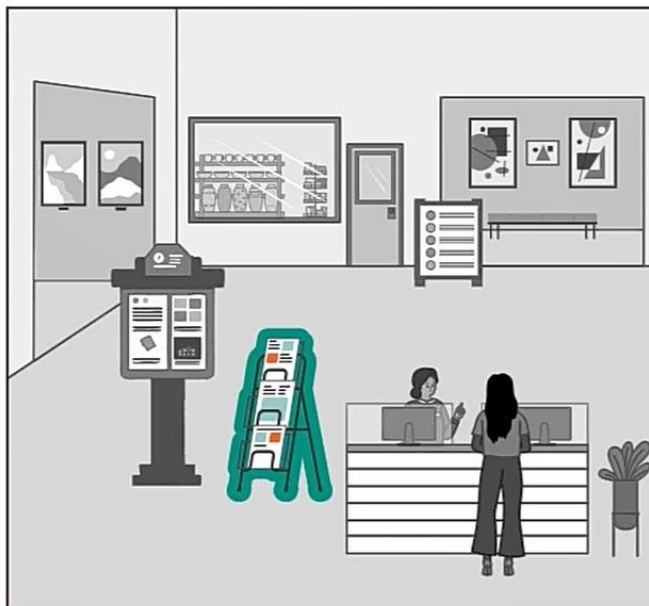


RESPONSE TIME



00:00:07

Listen and repeat only once.



RESPONSE TIME



00:00:08

Listen and repeat only once.



RESPONSE TIME



00:00:10

Listen and repeat only once.



RESPONSE TIME



00:00:10

Listen and repeat only once.

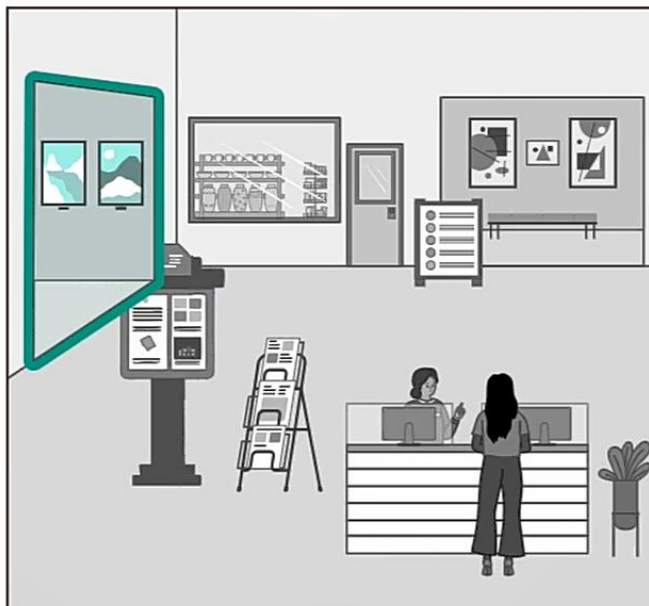


RESPONSE TIME



00:00:10

Listen and repeat only once.

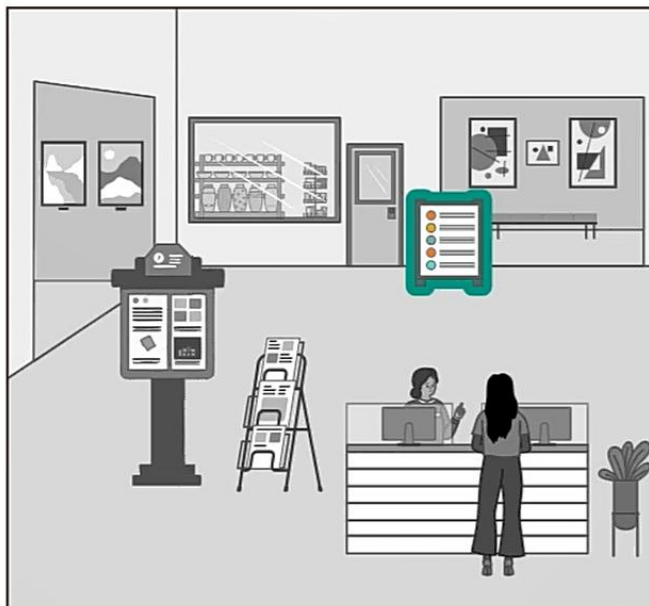


RESPONSE TIME



00:00:12

Listen and repeat only once.



RESPONSE TIME



00:00:12

Speaking

Take an Interview

An interviewer will ask you questions. Answer the questions and be sure to say as much as you can in the time allowed.

No time for preparation will be provided.

Speaking

You have volunteered for a research study about travel habits. You will have a short online interview with a researcher. The researcher will ask you some questions.



Please answer the interviewer's questions.



RESPONSE TIME



00:00:45

Please answer the interviewer's questions.



RESPONSE TIME



00:00:45

Please answer the interviewer's questions.



RESPONSE TIME



00:00:45

Please answer the interviewer's questions.



RESPONSE TIME



00:00:45